

# Pressure Transmitter Data Sheet

## Industrial Pressure Transmitter

### Model: CMPT124B-212 (Diffused Silicon)

#### Introduction

◆ CMPT124B-212 series adopt diffused silicon core sensor chip , high precision, high steadily pressure transmitters has been specially designed to cover the majority of industrial applications where need high accuracy measuring, compact design and robust construction make these instruments suitable for all application in machine construction, process control, laboratory or quality and materials testing equipment.

#### Application

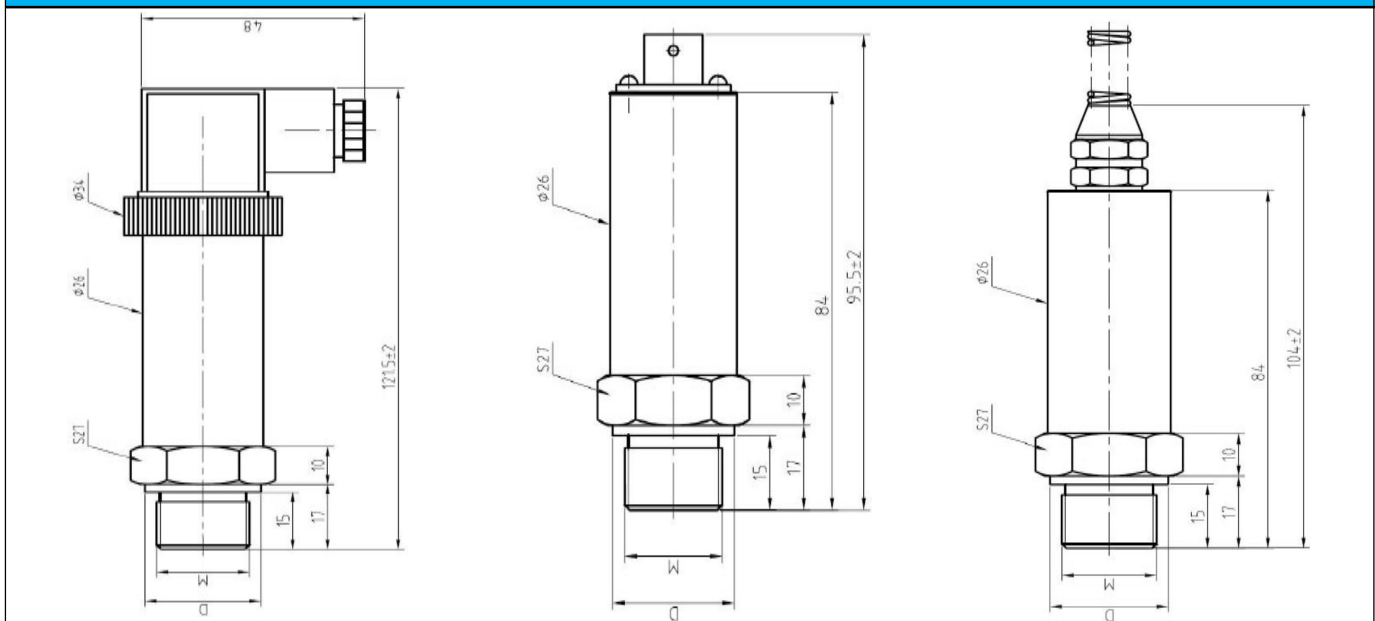
- ◆ Mechanical Engineering Industry
- ◆ Hydraulic and level measurement
- ◆ Gas tank pressure monitoring
- ◆ Industrial test and control
- ◆ General industrial application

#### Features:

- ◆ Various industrial standard signal output
- ◆ Various electrical connector available
- ◆ Certain stock for shortening delivery time
- ◆ High accuracy measuring
- ◆ compact dimension design



#### Dimensions(mm):



#### Remark:

The standard accuracy is 0.5%, and size diameter is 26mm, if you need special (  $\phi$  23mm ,  $\phi$  26mm,  $\phi$  38mm), when order ,please mention it , and we will send you the drawing to confirm .



# Pressure Transmitter Data Sheet


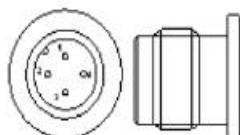
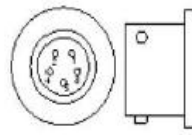
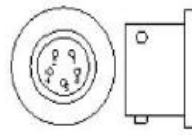
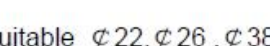
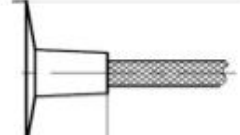
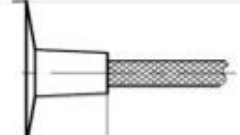
Technical Characteristics	
Model	CMPT124B-212
Range	-1....0....600bar
Accuracy	0.5%FS; 0.25%FS
Nonlinearity	0.2%FS
Reliability	0.2%FS
Output	4-20mA; 0-10V; 0-5V, 0.5-4.5V; 485communication 1.5mV/V; 2mV/V (CMPT124G-212)
Input voltage	12~36VDC ( 4-20mA,0-10V, 0-5V output ) 5 V DC ( 0.5-4.5V output ) 10V DC ( 1.5mV/V , 2mV/V output )
Operating Temperature	-20~80°C
Compensated temperature	0~75°C
Overload pressure	150%FS
Case material	Stainless steel (SS304 or SS316)
Electric connection	Hirschman(DIN), M12(4pins), 5pins(IP67), gland cable, direct cable optional(IP68)
Process connection	G1/4, G1/2, 1/2NPT, 1/4NPT, 1/4" BSP, M12*1.5 ( Customer design )
Housing Shell Diameter	∅ 23mm , ∅ 26mm , ∅ 38mm optional

Ordering Guide							
Model	Range (bar)	Output	Screw Thread	Electric connection	Accuracy	Diameter (mm)	Other requirement
CMPT124B-212	*	*	*	*	*	*	---
Example: CMPT124B-212-20Bar-4/20mA-1/4BSP-Hirschman(DIN)							



# Pressure Transmitter Data Sheet

## Electric Connection & Wiring Code

Electric connector	2 wire (4-20mA)			3 wire (0-10V, 0-5V, 0.5-4.5V)			5 wire (1.5mV/V, 2mV/V)		
<b>Hirschman (DIN)</b>  Suitable $\phi 22, \phi 26, \phi 38$	<b>Pin</b>	<b>Function</b>	<b>Color</b>	<b>Pin</b>	<b>Function</b>	<b>Color</b>	<b>Pin</b>	<b>Function</b>	<b>Color</b>
	1	E+/S+	Red	1	E+	Red	1	----	----
	2	E-/S-	Black	2	S+	Blue	2	----	----
	3	----	----	3	E-/S-	White	3	----	----
<b>M12,4Pins</b>  Suitable $\phi 22, \phi 26, \phi 38$	<b>Pin</b>	<b>Function</b>	<b>Color</b>	<b>Pin</b>	<b>Function</b>	<b>Color</b>	<b>Pin</b>	<b>Function</b>	<b>Color</b>
	1	E+	Brown	1	E+	Brown	1	----	----
	2	----	----	2	----	----	2	----	----
	3	S+	Blue	3	S+	Blue	3	----	----
<b>5 Pins</b>  Suitable $\phi 22, \phi 26, \phi 38$	<b>Pin</b>	<b>Function</b>	<b>Color</b>	<b>Pin</b>	<b>Function</b>	<b>Color</b>	<b>Pin</b>	<b>Function</b>	<b>Color</b>
	1	S+	Black	1	S+	Blue	1	S+	Blue
	2	E+	Red	2	E+	Red	2	E+	Red
	3	----	----	3	E-/S-	Black	3	S-	White
	4	----	----	4	----	----	4	E-	Yellow
<b>5 Pins</b>  Suitable $\phi 22, \phi 26, \phi 38$	5	----	----	5	----	----	5	C	Black
	<b>Gland Cable</b>  Suitable $\phi 22, \phi 26, \phi 38$	<b>Function</b>	<b>Color</b>	<b>Function</b>	<b>Color</b>	<b>Function</b>	<b>Color</b>		
		E+	Red	S+	Blue	S+	Blue		
		S+	Black	E+	Red	E+	Red		
		----	----	E-/S-	Yellow/White	S-	White		
----		----	----	----	E-	Yellow			
<b>Direct cable</b>  Suitable $\phi 23$	<b>Function</b>	<b>Color</b>	<b>Function</b>	<b>Color</b>	<b>Function</b>	<b>Color</b>			
	E+	Red	S+	Blue	S+	Blue			
	S+	Black	E+	Red	E+	Red			
	----	----	E-/S-	Yellow/White	S-	White			
	----	----	----	----	E-	Yellow			
<b>Direct cable</b>  Suitable $\phi 23$	----	----	----	----	C	Black			